

# CYTOPLAST® RTM COLLAGEN

Type 1 bovine collagen membrane

## FEATURES & BENEFITS

Manufactured from highly purified type 1 bovine achilles tendon	Safe for the patient
Longer, predictable resorption time (26 – 38 weeks)	No risk of particle loss due to premature resorption
Unique fiber orientation provides high tensile strength	You can suture or tack the membrane in place without tearing.
Cell occlusive	Prevents epithelial down growth
Optimized flexibility	Stiff enough for easy placement, yet easily drapes over ridge
Either side may be placed against the defect	No confusion



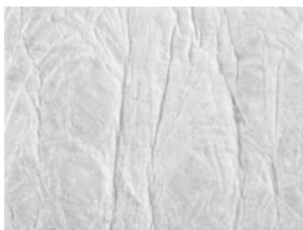
15 mm x 20 mm

RTM1520 (2 membranes per box)



20 mm x 30 mm

RTM2030 (2 membranes per box)



30 mm x 40 mm

RTM3040 (2 membranes per box)

## APPLICATIONS

- Periodontal defects
- Sinus lift osteotomies
- Repair of access windows
- Soft tissue augmentation
- Periapical lesions

## PRAISE FOR OUR PRODUCT

“Cytoplast® RTM Collagen membrane is a superior product for many surgical procedures.”

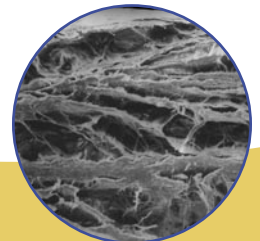
Jerald Rosenberg, DMD; Periodontist

“Cytoplast® RTM Collagen membrane is my choice of bovine membrane when re-entry is not needed. It is superior to other collagen membranes and handles with less tearing [and] movement and at a fraction of the cost of other membranes.”

Phillip Gattuso, DDS; Periodontist

“I have been very pleased with the space maintenance provided by the Cytoplast® RTM Collagen membrane and have been very happy with the regeneration of alveolar ridge in 4-6 months.”

Cory Wanatick, DMD; Periodontist



Multi-layer construction allows tissue integration into outer layer, while preventing direct passage of bacteria and epithelial cells.